

Qoltec®



PRODUCT CATALOG

Car holders



- ***AIR VENT CAR HOLDERS***
- ***MAGNETIC AIR VENT CAR HOLDERS***
- ***ANTI-SLIP MAT STAND***
- ***CAR HOLDERS FOR WINDSHIELD***

- ***INDUCTION CAR WIRELESS CHARGER***
- ***INDUCTION WIRELESS CAR CHARGERS WITH IR SENSORS***



NTEC sp. z o.o.
ul. Chorzowska 44B
44-100 Gliwice, Poland

info@ntec.pl
tel.: 48 32 600 79 89
www.b2b.ntec.eu





ADJUSTING HOLDER SIZE



AIR VENT



ADJUSTING VIEWING ANGLE



Qoltec Car holder X-C

Model: 51214

Colour: Black



PARAMETERS

Size: 4.0" - 7.0" inches

Distance between holders: 64 - 90mm

Compatible with: Smartphone

Mounting method: Latch /Ventilation cage

Equipment:

1 x air vent holder

1 x holder for smartphone

Qoltec Car holder X-CS

Model: 51215

Colour: Black-champagne



QOLTEC CAR HOLDER Y-CS | AIR VENT



ADJUSTING HOLDER SIZE



AIR VENT



Qoltec Car holder Y-CS

Model: 51218

Size: 4.0 - 7.0 inches

Distance between holders: 63mm - 90mm

Compatible with: Smartphone

Colour: Black - champagne

Mounting method: Latch / Ventilation cage

Equipment:

1 x air vent holder

1 x holder for smartphone



QOLTEC CAR HOLDER | AIR VENT



ADJUSTING HOLDER SIZE



AIR VENT



ADJUSTING VIEWING ANGLE

Qoltec Car holder

Model: 51210

Size: 1.4 - 6.4 inches

Adjustable width: 22mm - 99 mm

Colour: Black

Compatible with:

- iPhone/ iPhone 2/ iPhone 3/ iPhone 4 / iPhone 5
- Smartphone

Equipment:

- 1 x air vent holder
- 1 x holder for smartphone



Qoltec®

MAGNETIC CAR HOLDERS FOR MOBILE DEVICES

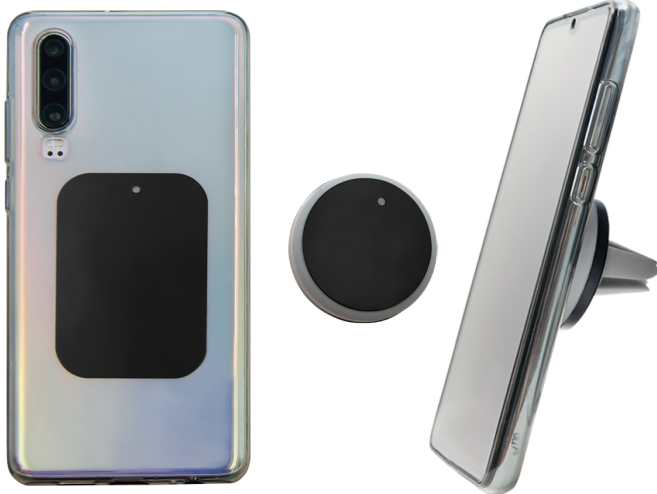
EASY INSTALLATION



STRONG MAGNETIC ATTRACTION



AIR VENT



Qoltec Magnetic car holder MINI

Model: 51227



Qoltec Magnetic car holder

Model: 51228



**ADJUSTING
VIEWING ANGLE**

PARAMETERS

Compatible with: Smartphone, navigation

Colour: Black - grey

Additional information:

- Equipped with a strong neodymium magnet that does not disturb the phone
- Easy installation
- No tilt adjustment possible

QOLTEC ANTI-SLIP MAT STAND FOR SMARTPHONE

Qoltec brand anti-slip stand features the best quality and made of high quality materials. Made of silicone. Serves as a holder for the phone.

The stand can be placed on the dashboard in the car, making it a practical solution for any driver, and thus the phone will always be in sight. The phone can be positioned vertically or horizontally. Thanks to the optimal tilt angle, the information displayed on the screen is visible.

The holder can also be used for kitchen worktops or other surfaces at home, in the office or when travelling.

Qoltec Anti-slip mat stand

Model: 51213

Size: min. 65 mm

Colour: Black - gray

Additional information:

- Adjacent to the dashboard, worktop and other surfaces
- Adhere without glue, no screws, non-magnetic
- Practical in the car, home and office



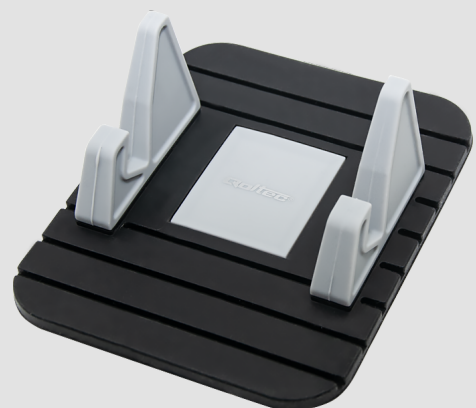
SIZE

73 mm



MIN. SIZE

65 mm



QOLTEC CAR WINDSHIELD HOLDER



ADJUSTING HOLDER SIZE



ON THE WINDOW



ADJUSTING VIEWING ANGLE



Qoltec Car holder

Model: 51212

Size: 3.2 - 6.0 inches

Adjustable width: 56mm - 83mm

Compatible with: Smartphone

Colour: Black





Qoltec®

UNIVERSAL CAR HOLDERS FOR MOBILE DEVICES



ADJUSTING HOLDER SIZE



ON THE WINDOW



ADJUSTING VIEWING ANGLE

PARAMETERS

Size: max. 6.8 inches

Adjustable width: max. 105 mm

Compatible with:

- iPhone / iPhone 2 / iPhone 3 / iPhone 4 / iPhone 5
- Smartphone
- iPod

Qoltec Car holder X-C

Model: 51208

Colour: Black



Qoltec Car holder X-CS

Model: 51209

Colour: White



QOLTEC INDUCTION CAR WIRELES CHARGER



CAR WIRELESS CHARGER



ON THE WINDOW



ADJUSTING HOLDER SIZE



POWER

Qoltec Car holder

Model: 51226

Plug type: 1 x Micro USB

Usable power: 5W

Output voltage: 5V- max 9V

Output current: 1A

Input voltage: DC: 5V- max 2A

Usage: Smartphone

Adjustable width: max 113mm

Cable lenght: 1m

Colour: Black



The Qoltec induction car charger allows you to charge a smartphone equipped with a Qi receiver.

Our device offers:

- wireless charging,
- windshield car mount holder,
- the ability to adjust the arms of the holder to the size of the smartphone,
- overvoltage protection, overload protection, short-circuit protection, overheating protection,
- high efficiency and low energy consumption.

QOLTEC INDUCTION WIRELESS CAR CHARGER WITH IR SENSORS



WIRELESS FAST CHARGER



FULL AUTOMATIC CLIP



QUALCOMM QUICK CHARGE 3.0



4.0 - 6.5 INCH SCREEN SIZES



MOUNTING TYPE



AIR VENT



ADJUSTING VIEWING ANGLE

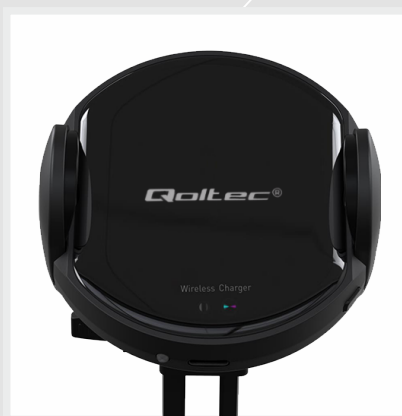
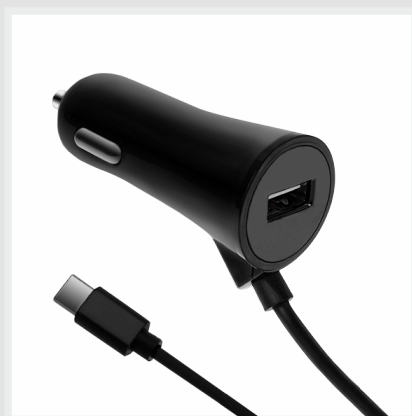
The Qoltec induction car charger allows you to charge a smartphone equipped with a Qi receiver. Our device offers:

- wireless or wired charging,
- Qualcomm Quick Charge 3.0,
- infrared sensor,
- 2 types of handles,
- an intelligent integrated circuit,
- led,
- overvoltage protection, overload protection, short-circuit protection, overheating protection,
- high efficiency and low energy consumption.



Qoltec Car holder PRO

Model: 51219



QOLTEC INDUCTION WIRELESS CAR CHARGER WITH IR SENSORS

Qoltec Car holder PREMIUM

Model: 51216



Qi is the term for a commonly used inductive charging standard. Allows you to:

- full comfort,
- charging takes place immediately after bringing the phone to the charger,
- safety,
- we eliminate connectors damage so common with traditional charging,
- comfort while driving,
- no wires restricting our movements while traveling. Wireless charging is possible for Qi-enabled devices only.

PARAMETERS

Plug type: 1 x USB 2.0 + 1 x built-in cable USB type C

Usable power: 15W

Output voltage: 5V/ 9V

Output current: 1A/1.2A/1.67A

Input voltage: 5.3V/2A

9V/2A(QC 3.0)

12V/2A

Adjustable width: max 93mm

Suitable for: Smartphones with diagonal between 4.7 to 6.5 inches

Cable length: 1.20m

Colour: Black

