

## INSTALLATION

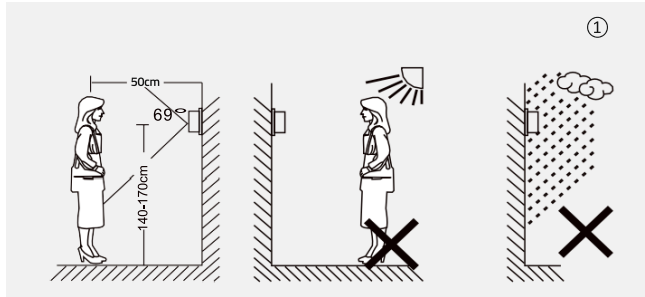
### INDOOR UNIT

1. Screw the bracket on the wall.
- 2 After connecting the cables, hang the device on the bracket. Finally connect the adapter.



### OUTDOOR UNIT

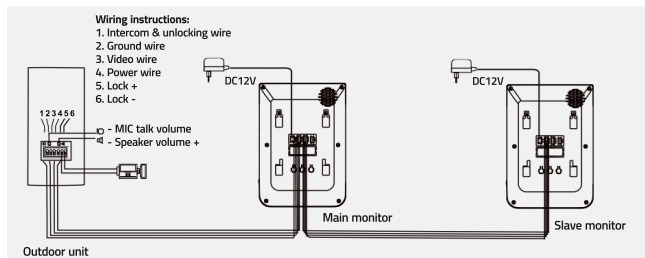
1. Fix the unit 1.4m - 1.7m high from the ground (according illustrated) so as to avoid direct sunshine.



2. Drill proper holes in the wall, plug up the screw holes with silicone caps. Fasten the rain cover on the wall with screws.
3. Refer to the wiring diagram to do the wire connection.
4. Fix the outdoor unit on the rain cover with screws.



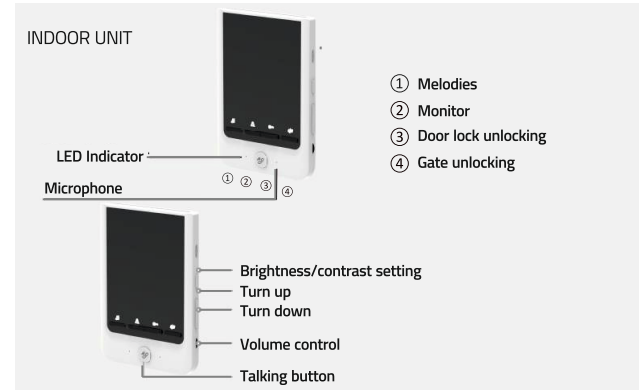
### WIRING DIAGRAM



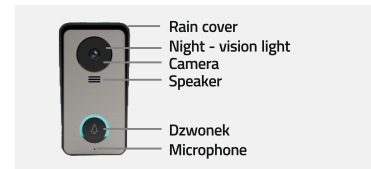
When the working distance between modules is 10 m, use a 4x0.3 mm<sup>2</sup> wire. To extend the cable up to 10m-30m, use a 4x0.5mm<sup>2</sup> cable. If you want to extend it to 30-50m, use a 4x0.75 mm<sup>2</sup> connection cable. The electromagnetic lock cable requires a wire 2x1.0 mm<sup>2</sup>.

Connect the wiring terminals 1,2,3,4 of indoor unit with wiring terminals 1,2,3,4 of outdoor unit separately. The wiring terminals of 5&6 of outdoor unit are connected with electronic lock through 2x1.0 mm<sup>2</sup> cable.

### OPERATION BUTTONS



### OUTDOOR UNIT



### OPERATION INSTRUCTION

1. Press CALL button of outdoor unit to call. The doorbell will ring and the images of visitors will show on the indoor unit. Press TALK (📞) to activate the intercom. Press TALK (📞) again to hang up. Each talking time lasts for about 120 seconds.
2. Press UNLOCK (🔓) to release the door lock.
3. Press GATE UNLOCK (🚪) to release the gate lock.
4. Press MONITOR (👤) button to turn on and it can last 40 seconds, or press again to turn off. At the same time, press TALK (📞) button for intercommunication.
5. Press MELODY SELECTION (🔊) button to cycle through the different tones available for the doorbell.
6. Press Brightness/contrast setting button (⚙️) to enter into the Brightness or Contrast setting option, and then press (⬇️) to turn down or up accordingly.

### COMMUNICATION BETWEEN MAIN MONITOR AND SLAVE MONITOR

1. Press the TALK button (📞), and both panels will ring at the same time. When one of the panels is received, the other will hang up automatically.
2. Long press TALK button (📞) of one indoor unit for 2s to call the other indoor units, the talking can last for 60s. If no one answers the call after 30s, the indoor unit will return to the standby mode.

# Qoltec®

## USER'S MANUAL VIDEO DOORPHONE THEON 4

Model: 51780



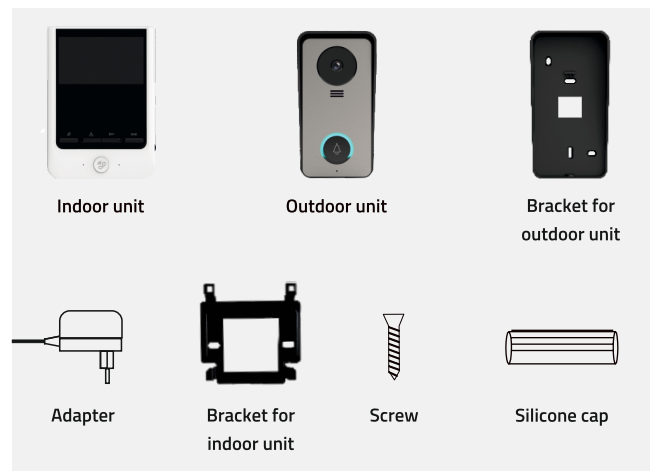
## PRODUCT DESCRIPTION

The color video doorphone is composed of an indoor monitor of 4.3 inch, an out-door unit, and a power supply. It can be used to monitor, call, intercom and unlock. Suitable for villa, single house, hotel, office and etc, giving you the combined benefit of security and convenience.

## PRODUCT FEATURES

- 4.3" TFT digital screen
- Hands-free intercom
- Ultra-thin design
- Intercom between any two monitors
- IP55 water-proof, damage-proof, oxidation-proof
- Electronic-lock unlocking
- Gate unlocking function
- Outdoor monitoring
- Brightness, contrast and talking volume can be adjusted via indoor unit
- Night vision
- Enclosed an adapter
- Extendable up to 2 indoor monitors (for option)
- There are 16 different melody ring tones for option.

## PACKAGE CONTENTS



## CAUTION

1. To prevent damage the adapter should be fastened on the wall according to instruction.
2. Keep the power plug in a convenient location for easy disconnection of the device.
3. When connecting AC power wire, please finish the connection before plugging in the power

## TECHNICAL SPECIFICATIONS



Indoor unit	
Screen size	4.3"
Resolution	480 (W) x 272 (H)
Effective area	53.86 (H) x 95.04 (W) mm
Dot pitch	0.107(W) x 0.370 (H) mm
Outline size	120 (W) x 170 (H) x 16 (D)mm
Adapter input voltage	AC 220-240V 50Hz/60Hz
Adapter output voltage & current	DC 12V 1A
Monitoring time	40s ± 10%
Talking time	120s ± 10%
Working distance	50m (4 x 0.75 mm <sup>2</sup> cable)
Power consumption	Static state <0.2 Working state <5W
Operating temperature	-20 °C~+50 °C
Relative humidity	10%~90% (RH)
Outdoor unit	
Night Vision	IR Light
Operating Temperature	-20 °C~+50 °C
Relative humidity	10%~90% (RH)
Illumination	0.1 LUX
Rozdzielczość	700TVL (CMOS)
Viewing Angle	110° wide angle (CMOS)
Size (with rain cover)	87(W) x 168(H) x 41(D)mm
Size (without rain cover)	79(W) x 159(H) x 30(D)mm

## SAFETY INSTRUCTION

- Keep the indoor unit away from high temperature such as near an oven or in direct sunlight and high humidity areas such as a bathroom.
- Do not install the indoor unit close to a television or any item that could cause interference or jamming of signal to the intercom.
- Do not touch the unit with wet hands.
- Avoid throwing, dropping or hitting the units.
- Clean the camera or screen with a soft cloth. Do not use detergent, thinner, volatile or corrosive liquid.
- Do not expose the camera of the outdoor unit to direct sunlight.
- To use the product make sure it is barrier free and there is no interference.
- Avoid powering the unit off while recording otherwise the data can be lost easily.

## TROUBLESHOOTING

Problem	Solutions
No video/audio	- Make sure all the connections are secured and properly connected. - Make sure there is nothing obstructing the view of the camera.
No video, but intercommunication is normal	- Make sure all the connections are secured and properly connected. - Make sure there is nothing obstructing the view of the camera.
No audio when calling	- Make sure the device is not muted. - Make sure that there is nothing such as object with strong magnetism interfering with the speaker or microphone. - Make sure all the connections are secured and properly connected.
The outdoor unit can not call the indoor unit	- Make sure all the connections are secured and properly connected.
Door unlock do not work	- Make sure the connections with the locks are secured and properly connected. - Make sure you have the lock wired to a power source enough to make it operate.
It is not possible to hear the external sound but the call tone is heard	- Press TALK button for 2-way intercom. - Make sure all the connections are secured and properly connected.
It is possible to hear visu-alize the sound of the out-side but is not possible to communicate	- Press TALK button for 2-way intercom as only pressing MONITOR button will prevent outdoor unit from hearing indoor unit. - Make sure all the connections are secured and properly connected.

	<b>Producer:</b> NTEC sp. z o.o. ul. Chorzowska 44B, 44-100 Gliwice, Poland	www.ntec.eu WEEE/BDO: 000137497 Made in China Designed in Europe	
---	--	---	---

