

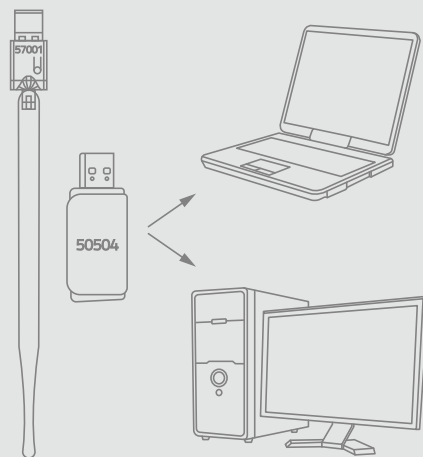
# QUICK INSTALLATION GUIDE

WIRELESS USB ADAPTER WI-FI  
MODEL 50504 / 57001

www.qoltec.com

## STEP 1 HARDWARE INSTALLATION

Without powering down the computer, only the card inserted into the corresponding slots in the correct direction. Map with USB adapter as an example.



### WINDOWS 7

Please insert the USB adapter directly and then follow the step 2, the software installation.

### Windows XP/Vista

Please insert the USB adapter first. Click „Cancel“ after the new hardware setup wizard pop-up, as shown below..

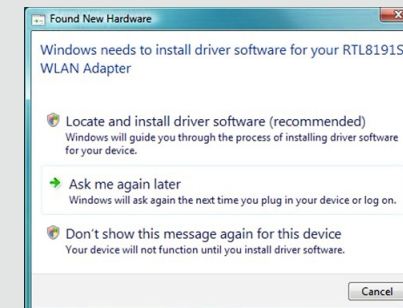
### Caution!

1. Keep away from heat ventilation.
2. In the storage, transportation and operation environment, please pay attention to the waterproof.
3. To prevent other harmful substance invasion, for example: acid, alkali.
4. Do not privately disassembly, failure, required by the professional technicians to repair.

## WINDOWS XP



## WINDOWS VISTA



## STEP 2 SOFTWARE INSTALLATION

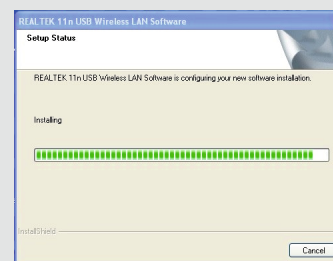
Software installation process in WINDOWS 7/VISTA/XP is basically the same, this in the WINDOWS XP system as an example.

A. Put your disc into your CD-ROM drive.

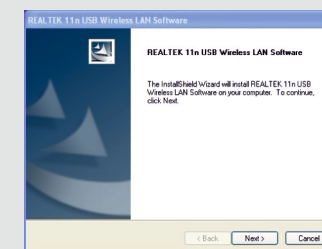
B. Double-click the icon [Setup.exe] from the following path to install.



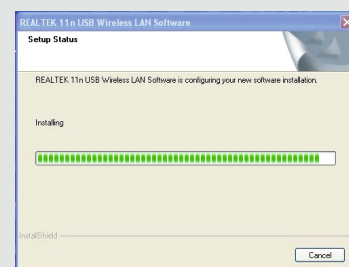
C. Prepare installation process only takes a second.



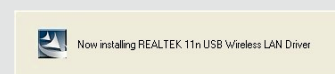
D. Click „Next“ to continue installation.



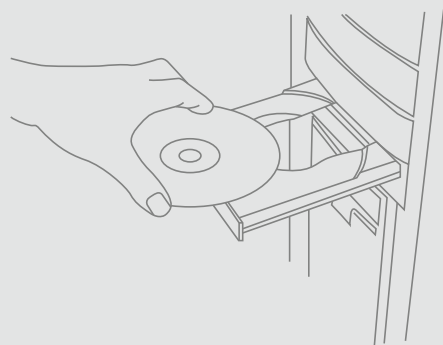
E. The installation process takes just a moment.



F. Please wait for a minute.




G. Click „Finish“ to complete the installation.



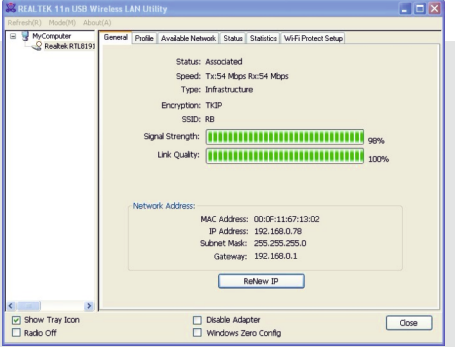
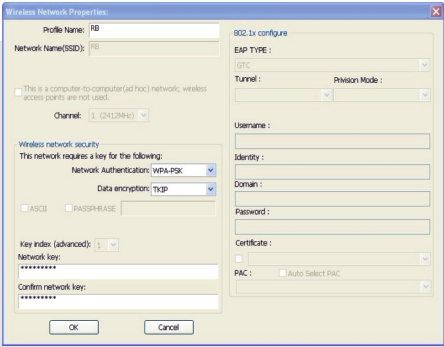
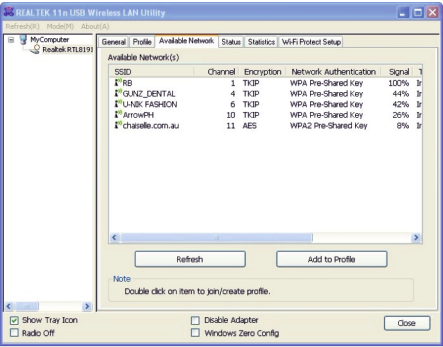
STEP 3  
CONNECTED TO THE NETWORK

Managing the process of configuration software for Windows 7 / Vista / XP is the same. If you have a WPS or QSS wireless router (or wireless access point) can refer directly to the quick and safe connection WPS, and wireless network to obtain a secure connection.

A. After the installation is complete, the client application will run automatically. Double click on the lower right corner of the computer icon  , choose your connection to the AP(for example:WLKJ-WIFIIN), then click on "Connection".

B. If you want to connect to the network is not encrypted, so no need for any set can be successfully connected to. If you want to connect to the network is encrypted, please input routing network key for the password, click „OK”.

C. Wireless networks such as bellow, indicates a successful access the network.



WIRELESS USB ADAPTER WI-FI  
FAQ

Wireless internet access is often cut off net?

1. Router connection is bad? If there was a loose of condition, make sure it is fixed.
2. The power adapter and the quality of voltage compliance requirements, can get a look at the adapter problem is it right?
3. Wireless signal transmission attention is too large or unstable, check card and routing between whether there is not too much obstacles.
4. Electromagnetic interference, whether it is not to near to electromagentic wave interference of wireless network card.
5. The wireless network card driver can work normally, recommend the use of the purchase of wireless network card comes with a CD-ROM drive.

Cable using normal, wireless network can not.

1. Wireless connection to the IP address, DNS address is automatically acquired, if not, then set the automatic acquisition.
2. Check if the wireless network card and the configuration of the router is consistent, if different, please change the arbitrary end.
3. Check if the wireless connection is able to obtain IP address, if there is no access, please link.
4. The router firewall filtering tools whether there is the wireless network card. If you set the filter rules, proposed to delete rules.

Connection is normal, but very slow.

1. The signal connection is weak, you can add an antenna to strengthen the power.
2. The program automatically downloads updates.

Hereby NTEC a.s. declares that the 50504 Wireless Adapter Wi-Fi and USB 57001 Wireless Adapter Wif-Fi USB antenna are in conformity with the essential requirements and other relevant provisions of Directive 1999/5 / EC. Declaration of Conformity available in the installation manual.

Producer / Producent: ntec  
ul. Chorzowska 44B,  
44-100 Gliwice, Poland

www.ntec.eu  
WEEE: E0012594WBW  
Made in China



Gliwice, 03.08.2015

Declaration of Conformity EC  
No. 50504/3K/1/2015



ul. Chorzowska 44B, 44-100 Gliwice

Hereby declare that the product:  
**Product name:** Mini Wireless USB Adapter Wi-Fi  
**Product code:** 50504  
**RT Part:** from 03.08.2015  
**Series:** MMXV-VIII

It is compatible with the following EC directives, together with all amendments and supplements:  
2004/108/WE – EMC Directive  
2011/65/EU – RoHS Directive  
1999/5/EC – R&TTE Directive

and that applied the following standards:  
EN 55022:2010  
EN 61000-3-2:2006+A1:2009+A2:2009  
EN 61000-3-3:2008  
EN 55024:2010  
EN 300 328 V1.8.1 (2016-06)  
EN 301 489-1 V1.9.2 (2011-09)  
EN 301 489-17 V2.2.1 (2012-09)  
EN 62479: 2010  
EN 60950-1: 2006+A11: 2009+A1: 2010+A12: 2011+A2: 2013

WEEE: E0012594WBW  
Year of marking CE: 2015

Gliwice, date: 03.08.2015

ntec Chorzowski, Łapa  
ul. Chorzowska 44B, 44-100 Gliwice  
ul. Śleska 11B 11B, 44-100 Gliwice  
www.ntec.pl e-mail: info@ntec.pl

Paweł Łapa  
Paweł Łapa  
Entrepreneur

Gliwice, 05.10.2015

Declaration of Conformity EC  
No. 57001/4K/1/2015



ul. Chorzowska 44B, 44-100 Gliwice

Hereby declare that the product:  
**Product name:** Wireless Adapter USB Wifi antenna  
**Product code:** 57001  
**RT Part:** from 05.10.2015  
**Series:** MMXV-X

It is compatible with the following EC directives, together with all amendments and supplements:  
2004/108/WE – EMC Directive  
2011/65/EU – RoHS Directive  
1999/5/EC – R&TTE Directive

and that applied the following standards:  
EN 55022:2010  
EN 61000-3-2:2006+A1:2009+A2:2009  
EN 61000-3-3:2008  
EN 55024:2010  
EN 300 328 V1.8.1 (2016-06)  
EN 301 489-1 V1.9.2 (2011-09)  
EN 301 489-17 V2.2.1 (2012-09)  
EN 62479: 2010  
EN 60950-1: 2006+A11: 2009+A1: 2010+A12: 2011+A2: 2013

WEEE: E0012594WBW  
Year of marking CE: 2015

Gliwice, date: 05.10.2015

ntec Chorzowski, Łapa  
ul. Chorzowska 44B, 44-100 Gliwice  
ul. Śleska 11B 11B, 44-100 Gliwice  
www.ntec.pl e-mail: info@ntec.pl

Paweł Łapa  
Paweł Łapa  
Entrepreneur