

Qoltec[®]



User manual
Wi-Fi Amplifier
Model: 57067

Introduction

Thank you for your trust and for choosing the Qoltec Wi-Fi booster. We are confident that this product will meet your expectations. This manual will guide you through the installation and use of the device. It contains important safety instructions regarding operation and correct installation. If you have any questions after reading the manual, please contact Customer Service.

About the product

The Wi-Fi signal booster extends the range of your existing wireless network. It can operate in repeater or access point (AP) mode, making it a versatile solution for everyday use. It ensures a stable internet connection throughout your home or office.

Description of indicator lights

Icon	Name	Status	Description
SYS	System	Flashing	The system starts up normally
		OFF	System start-up error or device failure
LAN	LAN	ON	The LAN port connection is OK
		OFF	No Ethernet cable connected or error
Repeater	Repeater	ON	Repeater connection successful
		OFF	System running, but repeater connection failed

Description of buttons and interfaces

LAN Connect the LAN port of your computer or router

Reset Reset button; hold for 10 seconds to restore factory settings

Figure 1 showing the button layout in the appendix to the manual

Operating mode diagram

1. Repeater mode: acts as a wireless signal booster

Extending the WiFi signal without cables eliminates the problem of cabling, but does not improve WiFi speed.

(Figure 2: Router → WiFi booster → Phone/laptop)

Extend the WiFi signal without using cables; establish a stable connection between the computer and the booster via a cable, but this will not improve WiFi speed.

(Illustration 3: Router → WiFi booster → Cable → Phone/laptop)

2. AP Mode: functions as an access point to extend the wireless network range

In areas with a weak WiFi signal, to achieve better WiFi speed, you can use Ethernet cables to connect the router and the booster, which then acts as an access point.

(Figure 4: Router → Cable → WiFi booster → Phone/laptop)

Note: if you need to connect a network cable, set up the repeater first before connecting the cable to avoid incorrect settings resulting from plugging in the cable before configuration.

Installation instructions

1. Connect the power supply and wait approximately 60 seconds for the system to boot up. Then use your phone or computer to search for a Wi-Fi network named “WiFi_Repeater_XXXXXX”. Once you click to connect, the administrator login interface will open automatically; select your language and enter the settings panel.

Note: “XXXXXX” refers to the last 6 characters of the device’s MAC address.

Figure 5 in the appendix

2. Repeater mode settings

- a) When you log in for the first time, the configuration interface will open automatically. If it does not appear automatically, there may be two reasons:
 - Your phone does not support automatic window opening.
 - The device is no longer in its factory state.
- b) If you wish to access the configuration interface again, you must open the browser on your phone and enter the following in the address bar: “192.168.11.1” or “zqiqi.cn”

Figure 6 in the appendix

Step 1: Select ‘Repeater Mode Settings’ and click ‘NEXT’ to proceed to the wireless signal search page.

Step 2: Select the wireless signal you wish to extend and click Connect.

If it is a hidden network, you will need to add it manually.

Figure 7: Repeater mode settings screen, list of available Wi-Fi networks

Step 3: Enter the password for your wireless router and click “Next”.

If you want the network name to be different from the router’s name, tick “modify the wireless name of the WiFi extender” and enter a new name.

Step 4: Click the “Finish” button to complete the repeater mode setup.

Once the settings are complete, wait 30 seconds; the device will restart automatically.

The extended WiFi network name will have the suffix “-2.4G-ext” appended to the router’s name, and the password will be the same as the router’s.

Figure 8 in the appendix

3. AP (Access Point) mode settings

Step 1: Select “AP Mode Settings” and click “NEXT” to proceed to the settings page.

Step 2: Set the wireless network name and password (must be at least 8 characters long).

(You can set the name and password according to your preferences).

Figure 9 in the appendix: AP mode settings screen with an example network name and password

Step 3: Click the “Finish” button to complete the AP mode settings.

Step 4: The AP mode settings are complete – wait for the system to restart.

The following message will appear on the screen:

“Setup is complete, reconnect to the network after 30s”

(Setup complete, reconnect to the network after 30 seconds).

Note: While using the device, check the LED indicators to ensure the repeater is working correctly.

Figure 10 in the appendix

Troubleshooting

1. Does your phone not automatically open the management panel when connected to the WiFi repeater?

A. You can access the configuration interface by opening a browser on your phone and entering the management address: “192.168.11.1” or “zqiqi.cn”.

2. I cannot access the repeater’s management panel

Ans. Make sure the repeater has booted up correctly.

Check that your phone/computer is connected to the extended WiFi network.

Make sure your computer’s network card settings are set to “obtain IP address automatically”.

If the repeater is already connected to the router, you will find its IP address in the router’s DHCP list.

If the above steps do not help – reset the repeater to factory settings and reconfigure it.

3. What should I do if the "repeater indicator" is not lit after configuration?

Ans. An incorrect Wi-Fi password may have been entered during setup – please enter it again.

Make sure the repeater is close to the router, within its range, and away from strong sources of interference.

If the router has MAC filtering, access control or ACL enabled – disable them, then try again.

If it still doesn't work – reset to factory settings and try again.

4. I can't connect to the internet after setting up the repeater. What should I do?

Ans. In repeater mode – make sure the main router has internet access.

Check that the repeater is correctly connected to the router and that the indicator light is on continuously.

In AP mode – check that the repeater's network cable is connected to the router's LAN port and that the LAN light is on as normal.

In AP mode – make sure the parent router has internet access.

Make sure the end device (phone/computer) is connected to the repeater's network.

If the parent router has MAC filtering, access control or ACL enabled – disable these functions.

If the router's IP address is in use or the number of devices has exceeded the limit – restart the router and repeater, then reconfigure them.

If the problem persists – reset the repeater to factory settings and reconfigure it.

5. What should I do if my phone, tablet and laptop cannot connect to the wireless network?

Make sure the Wi-Fi function on your device is switched on.

Check that the repeater is working properly and is connected to the main router.

Make sure you have selected the correct network name and entered the password correctly.

6. Why is the WiFi signal quality from the repeater poor?

Check that the main router has a stable internet connection.

Move the repeater so that it is within the router's signal range.

If the problem persists, reset the repeater to its factory settings and reconfigure it.

7. How do I reset the device to factory settings?

While the system is booting up, press and hold the Reset button for 10 seconds. The device will be restored to its default settings.

Note: After the reset, all saved settings will be deleted and the repeater will need to be reconfigured.

8. What should I do if I want to change the name and password of the extended network?

Hold down the Reset button for more than 10 seconds to restore the device to its factory settings, then set a new name and password.

Safety instructions

To ensure safe and correct use of the device, you must strictly observe the following rules:

1. The device is intended for indoor use.
2. Ensure adequate ventilation – do not cover the device with fabric or other objects.
3. This product is not a toy – keep it out of the reach of children.
4. Do not allow children to use the device, cables or packaging materials (risk of choking, electric shock or injury).
5. Place the repeater on a stable, flat surface to prevent it from falling and becoming damaged.
6. Do not open, modify or attempt to repair the device yourself – this poses a risk of electric shock and will invalidate the warranty.
7. To clean, disconnect from the mains and use a dry cloth. Do not use liquids or aerosols.
8. Ensure that the socket to which you are connecting the device is in good working order and earthed.

9. Protect the device from direct sunlight and extreme temperatures.
Operating temperature range: 0°C to +40°C.
10. It is recommended that you periodically check the technical condition of the device. If you suspect a malfunction, contact an authorised service centre.
11. Use strong and unique Wi-Fi passwords to prevent unauthorised access.

Disposal

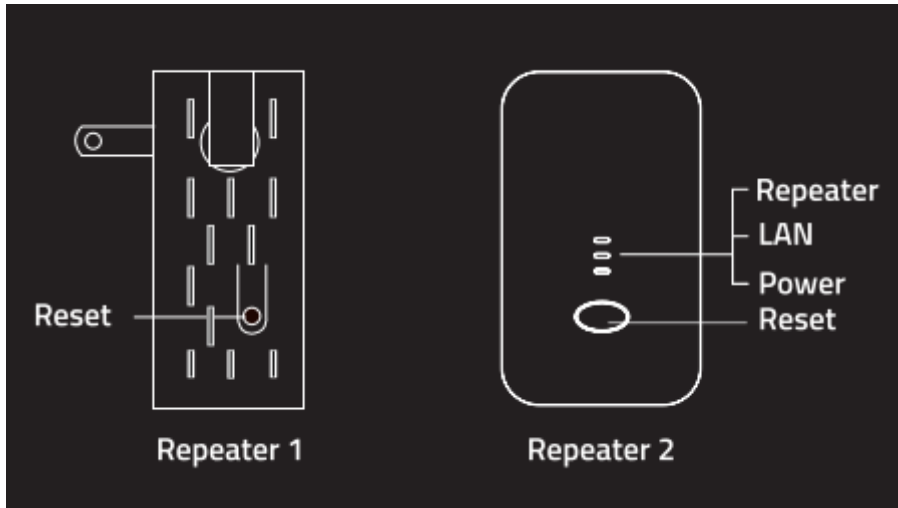
1. Dispose of the device in accordance with local regulations on electronic waste (WEEE Directive).
2. Do not throw into fire or incinerate.

Warranty

The product is covered by a 24-month manufacturer's warranty from the date of purchase. If you encounter any issues, please contact customer service.

Attachment

1.



2.



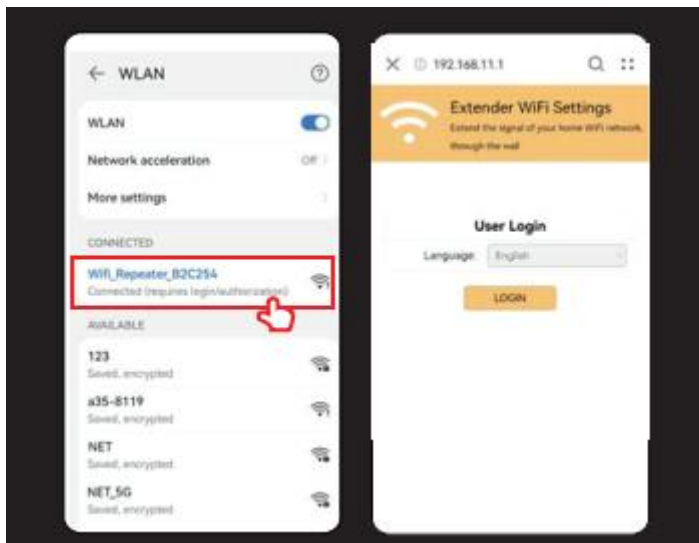
3.



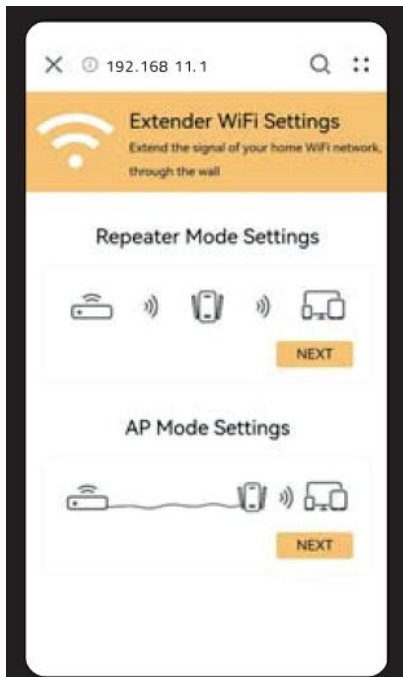
4.



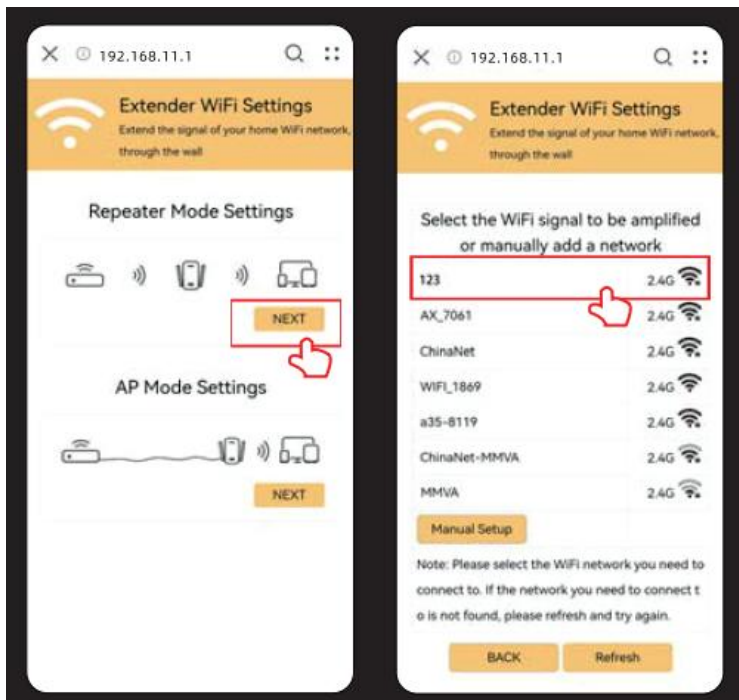
5.



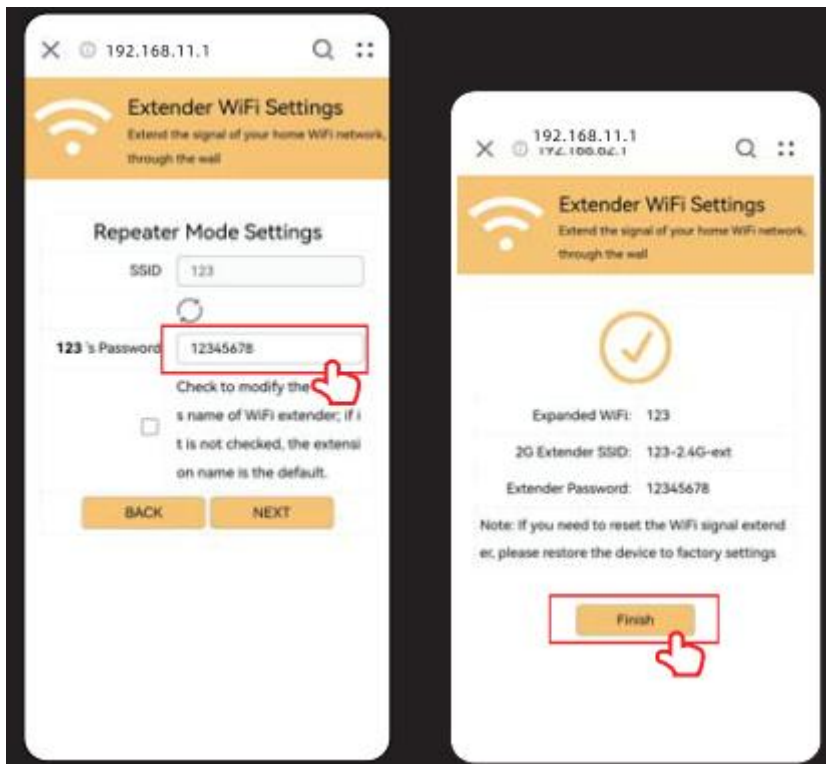
6.



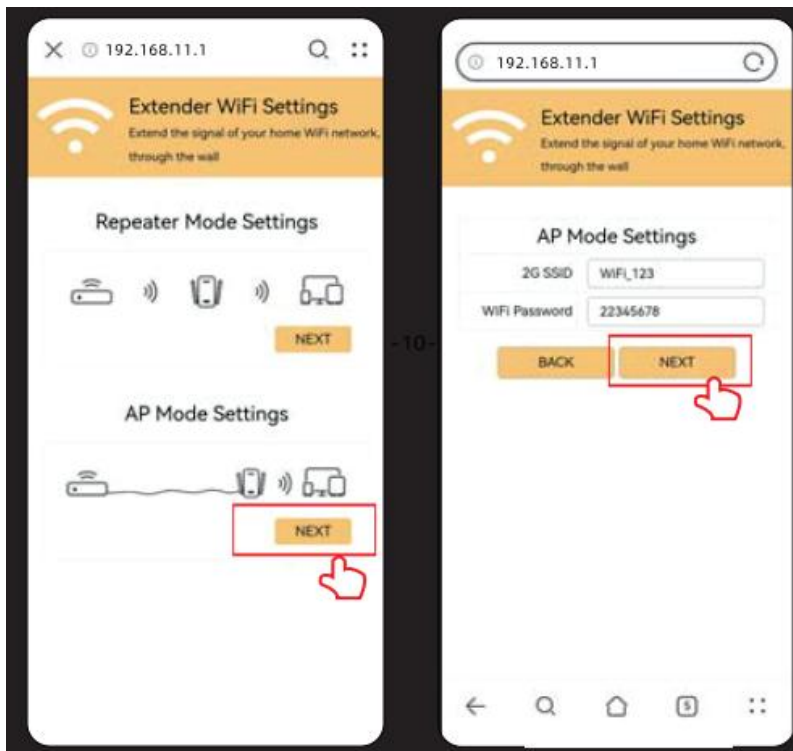
7.



8.



9.



10.

