



## Qoltec Cable Patchcord UTP | CAT6 | 2 x RJ-45 | 2m | High speed | Gold

Product code: 54532

Qoltec Patchcord UTP Cat.6 cable with a length of 2m, terminated with two gold-plated RJ-45 type connectors in a sealed sheath. Used for Ethernet connections such as in offices, data centers, or even home computer networks. Allows data transfer at speeds of up to 1 Gb/s. The cable does not have an additional protective shield.

### HIGH-SPEED TRANSMISSION AND STABLE CONNECTION



### Quickly transfer data at speeds of up to 1 G/s

Qoltec's UTP CAT6 cable is a 2 m unshielded cable designed to support data transfer speeds of up to 1 Gigabit per second on Ethernet networks. Suitable for high-speed data transfer applications such as file transfer, video streaming, video conferencing requiring high network bandwidth. Particularly used in data communication networks, computer networks, power transmission, data transmission and monitoring systems.

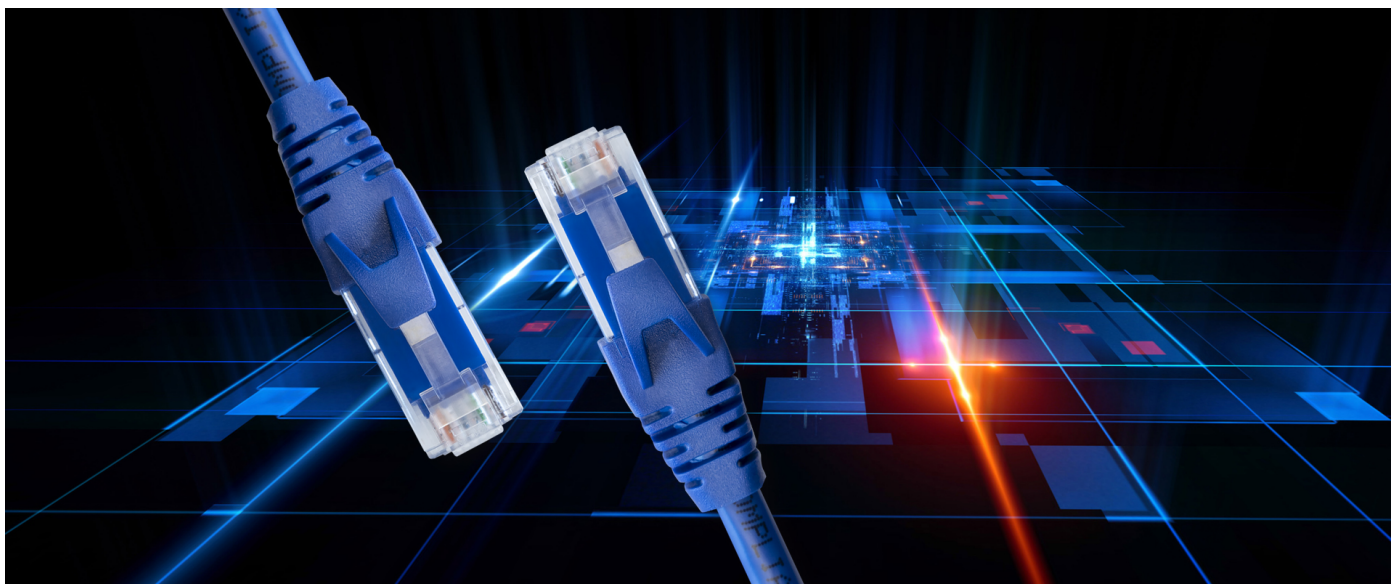
## ACHIEVE A NEW LEVEL OF NETWORK EFFICIENCY



### **Eight pairs of twisted wires, gold-plated terminals covered with a plastic sheath**

- It consists of eight twisted pairs of wires,
- The cable sheath is made of PVC,
- Each pair of wires is **covered with an insulating layer** to protect against interference,
- **Unshielded** - does not have an additional protective screen,
- At both ends of the cable are **RJ-45 connectors** - standard modular connector equipped with **8 pins**,
- **The ends of the cables are gold-plated for better signal conduction**,
- The ends of the RJ-45 connectors are **covered with a plastic shield**, which helps protect the ends from mechanical damage and maintains a **stable connection**,
- **High quality** construction confirmed by warranty.

## CONFIDENCE CONFIRMED BY A WARRANTY



### Quality Guarantee - Your Secure Connection

Do you care about the high quality of the product you are buying? Our solutions will meet your expectations.

The product is covered by a 24-month guarantee valid from the date of purchase.

#### TECHNICAL DATA

Producer	Qoltec
Type patchcord	Unshielded
Category	CAT6
Class	UTP
Type connectors	2 x RJ-45
Transmission speed	1Gb/s
Coating	PCV
AWG cross section	26AWG
Cross-section of a vein	7 x 0.16mm
Structure of the conductor	Copper
Additional information	Gold-plated plugs Multicore Uncrossed cable
OTHER PARAMETERS	
Colour	Blue
Cable length	2m
Package	Blister
Package contents	1 x Cable Patchcord
Package depth / length [mm]	246
Package width [mm]	205
Package height [mm]	10
Net weight [kg]	0.079
Gross weight [kg]	0.083
Warranty	24 month
EAN code	5901878545325