



## Qoltec Electronic Timer Switch for DIN Rail with Built-in Battery | 7-Day Schedule | 16 Programs

Product code: 50983

A timer designed for mounting on a DIN rail. It enables automatic control of electrical devices according to a daily or weekly schedule. With 16 programmes and accuracy to within 1 minute, it provides full control over lighting, heating and other systems. Used to automate daily operations, it can effectively reduce energy consumption thanks to the option of controlling the switch-on and switch-off times of devices according to the time set by the user.

- Built-in battery
- DIN35 rail mounting
- Clear LCD display
- Up to 16 daily or weekly settings

### EFFECTIVELY MANAGE YOUR ELECTRICITY CONSUMPTION



Automate your home – control when devices switch on and off – Ideal for lighting, heating and industrial systems

With a maximum load of 16A/3600W and DIN rail mounting, the programmer will work in almost any electrical installation – from small home systems to advanced industrial systems.

Examples of applications: ■ Lighting: automatic switching on and off of lamps, backlights, illuminated advertisements and garden lighting. ■ Heating and air conditioning: inspection of electric heaters, furnaces, boilers, fans, and heat pumps. ■ Industrial systems: control of motors, pumps, compressors and production equipment in fixed cycles. ■ Home installations: automatic management of audio/video equipment, aquariums, watering systems and blinds. All you need to do is programme the device, set its operating time and adjust it to your needs..

■ Offices and service premises: energy-efficient operation of lighting and equipment during opening hours. The device has a built-in battery that is constantly recharged during operation, which protects the device from losing the settings entered due to a power failure.

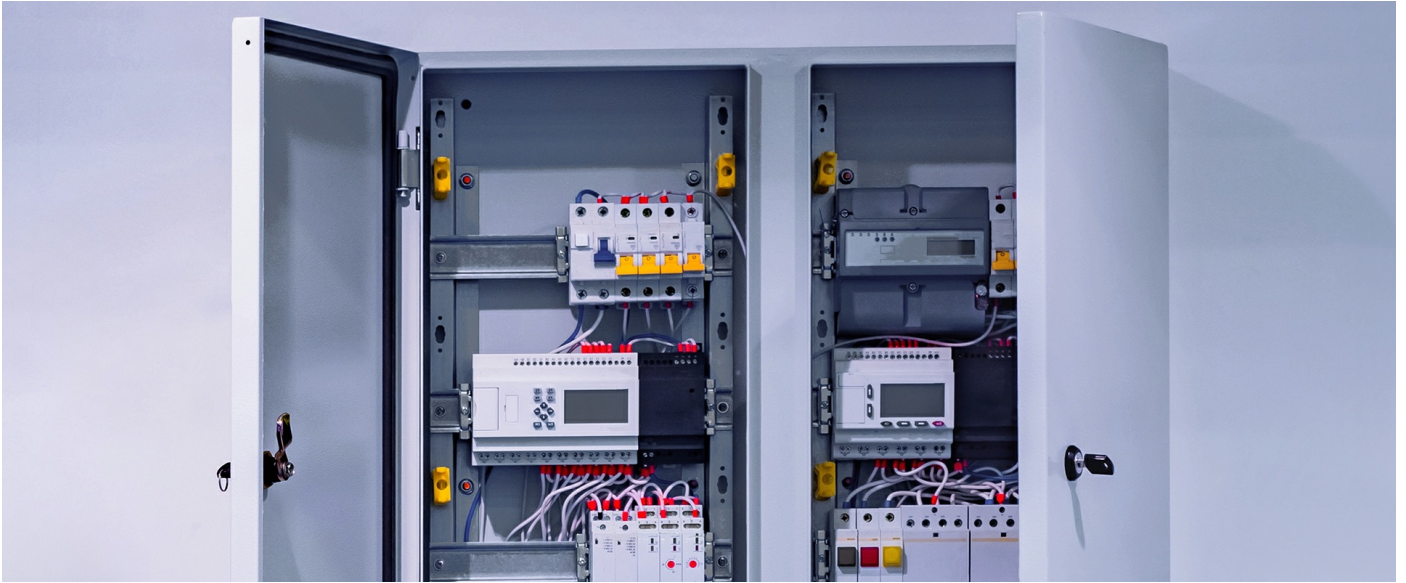
## AUTOMATE YOUR HOME - CONTROL THE ON AND OFF TIMES OF YOUR APPLIANCES



You gain convenience, increase safety, save energy, protect your equipment – you eliminate the risk of overloads and excessive wear and tear.

The device utilises an advanced microprocessor system that ensures measurement stability, precision and reliable switching in all conditions. Simply programme the operating time once to enjoy full automation and functionality, combining technology, economy and safety in one compact device. You gain complete convenience and control over the operation of your devices – the Qoltec programmer independently controls their operation according to your schedule. You increase the safety of your installation by protecting your equipment from overloads and excessive wear, while saving energy by reducing unnecessary device operation.

## PRECISE CONTROL OF DEVICE OPERATING TIME



### Advanced programming capabilities

- A clear, backlit LCD display with a protective cover facilitates configuration and parameter reading.
- Built-in battery - recharges during operation, the programmer retains settings for up to 180 days without power supply.
- Up to 16 daily or weekly settings.
- The time setting includes HOUR, MINUTE and DAY.
- The device allows you to set up to 18 pulses with an accuracy of 1 minute, and the built-in automatic time correction of 30 seconds per week ensures uninterrupted precision.
- Manual override function to set the timer switch to always on or off.
- DIN35 rail mounting – easy to install and configure.
- Random setting so that the lights switch on and off at random times, e.g. during holidays.

## CONFIDENCE CONFIRMED BY A WARRANTY



The product is covered by a 24-month warranty.

Do you care about the high quality of the product you are buying? Our solutions will meet your expectations. The product comes with a **24-month guarantee valid from the date of purchase.**

## TECHNICAL DATA

Producer	Qoltec
Voltage range	AC 220–250V 50/60Hz (DC12V, DC24V, AC110V, AC380V, AC/DC24V–240V)
Power consumption	7.5VA (max)
Frequency	50Hz
Maximum load	16A / 3600W
Built-in battery	Yes (10 cycles)
Display	LCD
Installation	DIN TH35
Application	Streetlights, neon lights, advertising signs, production installations, domestic lighting, garden lighting, air conditioning, domestic heating
Additional information	Memory 180 days 16 operation / day or week on/off 24-hour and 7-day programming
<b>OTHER PARAMETERS</b>	
Colour	White
Material	ABS
Operating temperature	-10°C ~ +40°C
Dimensions (D/L x W x H)	65 x 36 x 85 mm
Package contents	1 x Qoltec Timer 1 x Operating instructions
Package	Box
Package depth / length [mm]	40
Package width [mm]	92
Package height [mm]	73
Net weight [kg]	0.132
Gross weight [kg]	0.151
Certificate	CE
Warranty	24 month
EAN code	5901878509839