



Qoltec Double-sided straight plate for electric door strike | Catch plate | 250mm | Stainless steel

Product code: 52461

Made of stainless steel, a simple, double-sided and durable electric door strike sign designed for use on both left and right-hand doors. It enables doors, gates or wickets to be opened and closed using an electric door strike.

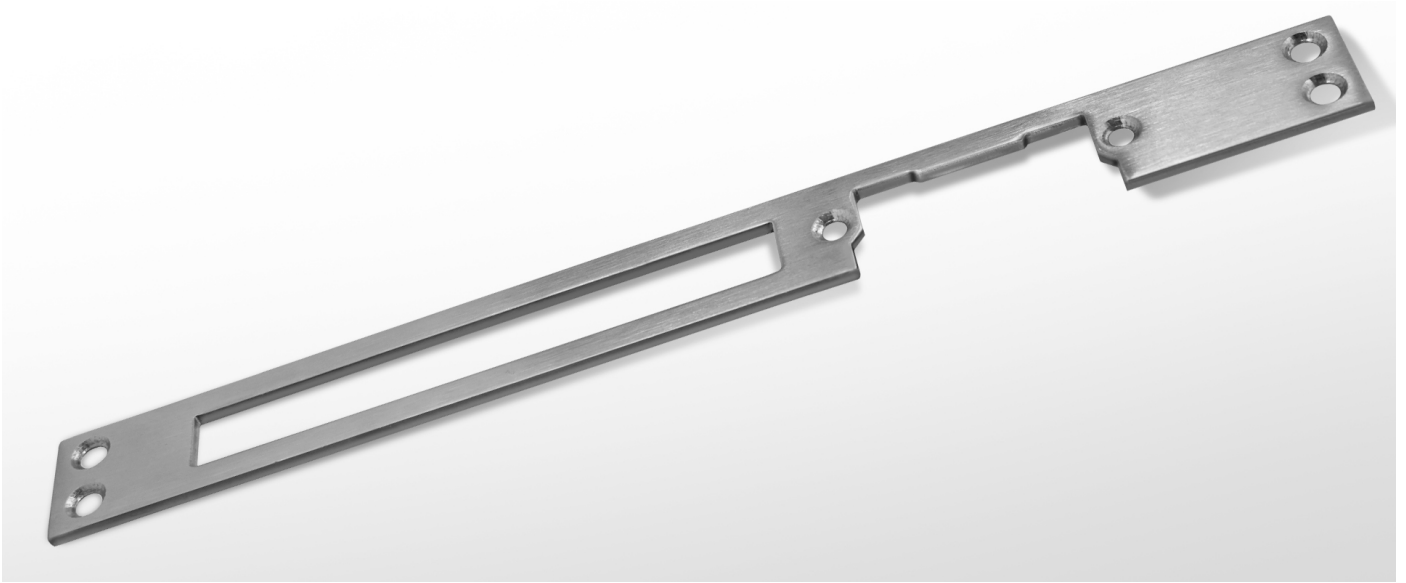
INNOVATIVE SOLUTIONS FOR ACCESS CONTROL AND SECURITY



Can be mounted on both left and right-hand doors

The door strike sign is an indispensable component that works with the electric door strike to protect access to a room from unauthorised persons. It is designed so that it can be easily mounted on different types of posts made of clinker, metal or wood, for example. Its construction allows it to be mounted on both left and right-hand doors, ensuring versatility of use.

EXCELLENT DURABILITY AND RESISTANCE TO EXTERNAL FACTORS



Manufactured from high quality stainless steel

Made of stainless steel, the sign is **durable and weatherproof**, guaranteeing **long-lasting use without fear of corrosion or other damage**. Its **solid construction** makes it virtually invisible once fitted, further emphasising its functionality and aesthetics.

CONFIDENCE CONFIRMED BY A WARRANTY

Product with 24 months guarantee

Do you care about the high quality of the product you are buying? Our solutions will meet your expectations. The product comes with a **24-month guarantee** valid from the date of purchase.

TECHNICAL DATA

Producer	Qoltec
Type	Double-sided
Direction	Left/right
Used	Opening and closing of doors, gates or wickets with an electric door opener
OTHER PARAMETERS	
Colour	Silver
Material	Steel
Dimensions (D/L x W x H)	250 x 25 x 3 mm
Package contents	1 x Double-sided straight plate for electric door strike
Package	Blister
Package depth / length [mm]	290
Package width [mm]	95
Package height [mm]	10
Net weight [kg]	0.080
Gross weight [kg]	0.084
Warranty	24 month
EAN code	5901878524610