



Qoltec Hybrid Solar Inverter Off-Grid 10KVA | 5,5kW | 100A | 48V | MPPT | Sinus

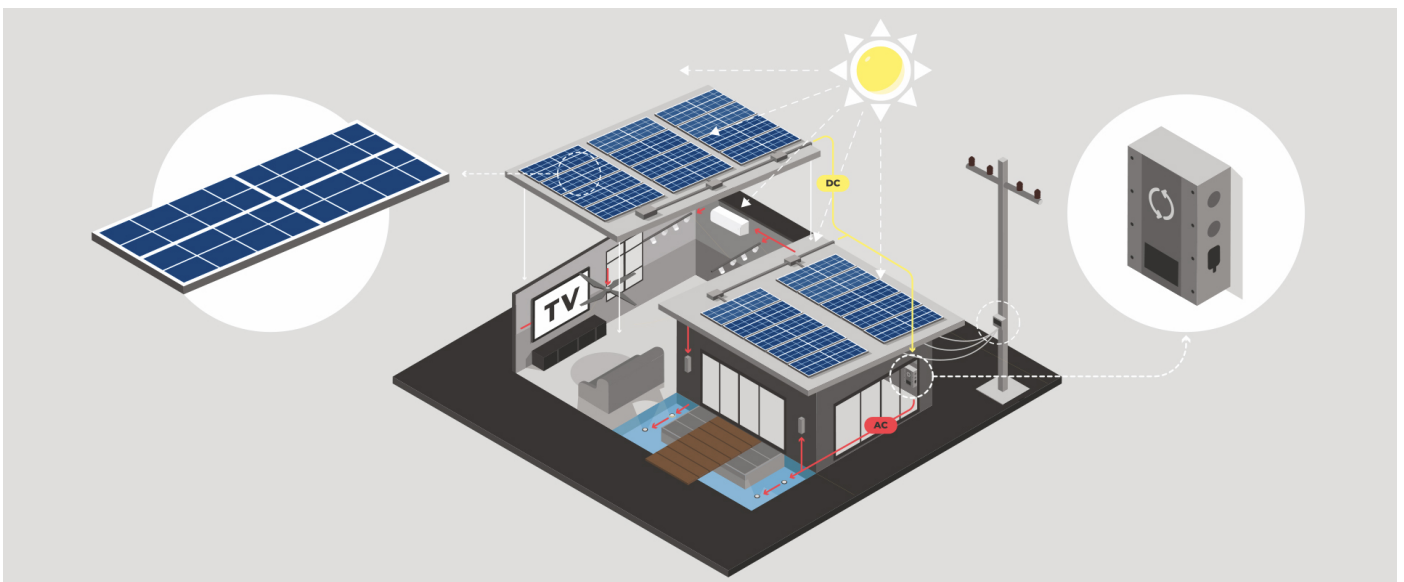
Product code: 53887

The off-grid hybrid inverter converts the energy created by PV modules into energy needed to power electrical appliances. It works as a solar charger and battery charger. Equipped with a multifunctional LCD display that records operating data allowing continuous monitoring and management of the entire system. The inverter operates in off-grid mode.

It has a built-in 100A MPPT charge controller. Possibility to connect an additional wi-fi module. Does not support BMS.

Possibility to connect a compatible wi-fi module: product code [53962](#)

HOW DOES THE OFF-GRID HYBRID INVERTER WORK?



The efficiency of a solar PV system depends on the selection of the right inverter, or solar inverter. The inverter performs a key function in this system, changing the DC current generated by the solar PV panels into AC current used by household appliances.

The off-grid hybrid inverter combines the solar PV system, energy storage and the power grid. During the day, it charges the energy storage from the photovoltaic panels. The energy storage unit powers household appliances from the stored energy during the day, and when the batteries are discharged, it draws energy from the grid.

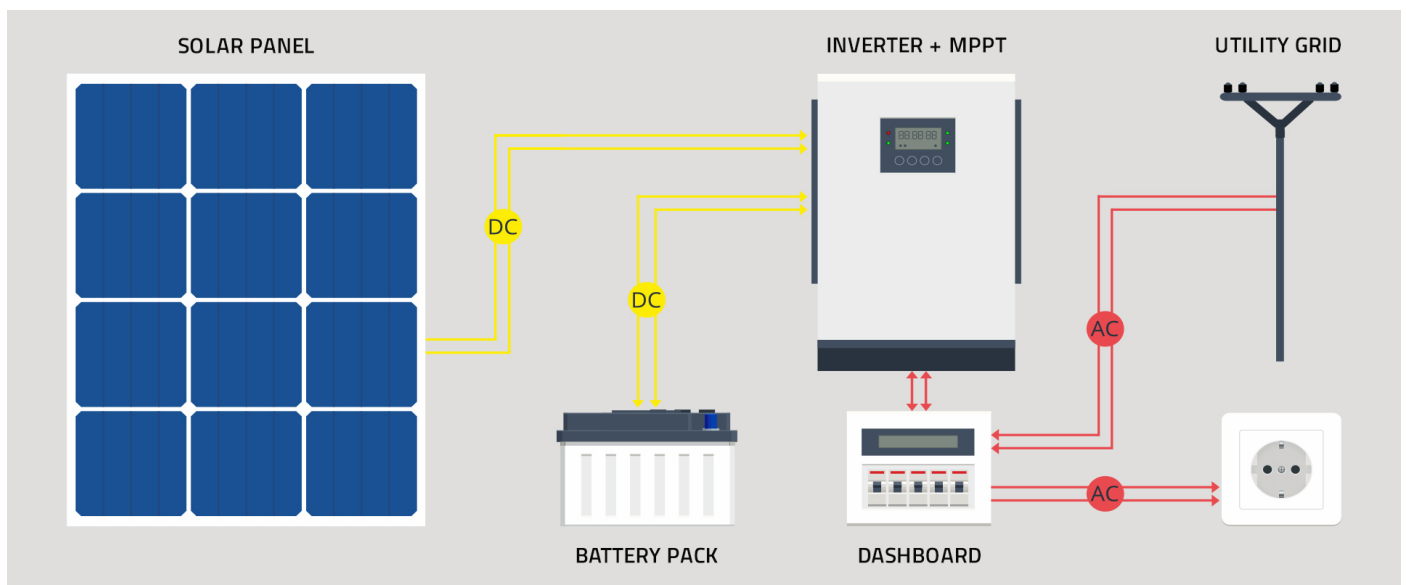
The inverter works in off-grid mode, using excess solar energy to power consumers and charge the battery. In the event of an emergency, current is drawn from the solar PV system to the energy storage and can safely and uninterruptedly ensure the continuous operation of our appliances.

WHY SHOULD YOU CHOOSE A HYBRID INVERTER ?



- Inverter with pure sine wave type inverter,
- automatic restart during power restoration,
- possibility of power supply from mains or generator,
- ability to change AC/Solar charger priority settings via LCD display,
- smart charger design for optimal battery performance,
- configurable input voltage range for home appliances and personal computers via LCD settings,
- configurable battery charging current depending on devices and PCs via LCD settings,
- protection against overload, overheating and short circuit,
- cold start function.

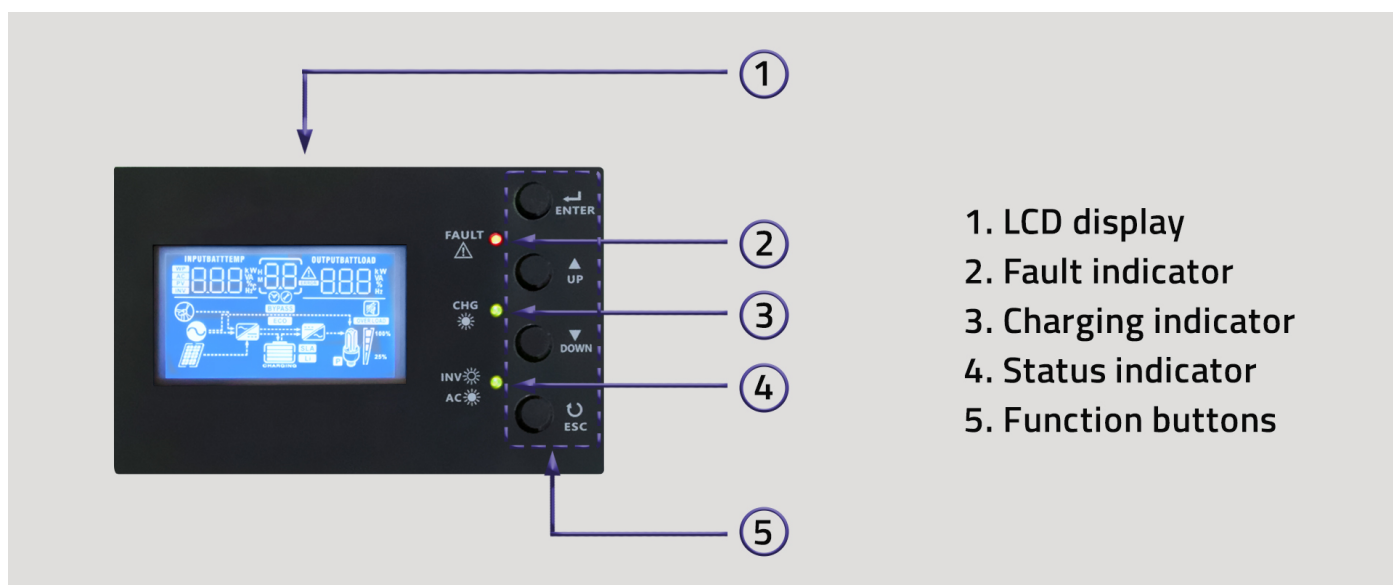
MAXIMIZE THE POSSIBILITIES WITH MPPT TECHNOLOGY



The battery charging inverter uses a state-of-the-art 100A MPPT charge controller to maximize the power drawn from the photovoltaic panels, using advanced maximum power point tracking technology.

Having this feature significantly affects the efficiency of the photovoltaic installation—they can maintain high power even in low sunlight conditions. In addition, the controller controls the battery operation and charging process and protects the battery from damage.

MULTIFUNCTION LCD DISPLAY



The product is equipped with a multifunctional, easy-to-use LCD display with control panel.

Facilitates monitoring of the entire photovoltaic installation . Allows you to configure the input voltage range for home appliances and personal computers or change the priority settings of the AC/Solar charger. In addition, the display **records data and informs about failures**, reacting accordingly if any of the parameters exceed the norm. If a fault occurs, the inverter shuts down.

CONFIDENCE CONFIRMED BY A WARRANTY

Get clean energy with our solar inverters! Product comes with a **24 month** warranty from the date of purchase.

TECHNICAL DATA

Producer	Qoltec
Type	Off-Grid
Phase	1
Rated Power	5500VA/5500W
Input parameters	
Nominal Input voltage	230 VAC
Input Voltage Range	90 - 280 VAC
Working frequency	60/50 HZ
Output parameters	
Maximum power	10000 VA
Efficiency	90 % ~ 93%

Transfer time	10 ms (PC) 20 ms (Home appliances)
Waveform	Pure sine wave
BATTERY PARAMETERS	
Type of charging	MPPT
Battery voltage	48 VDC
Battery charging voltage	54 VDC
Maximum charging current	100 A
Battery overcharge protection	63 VDC
Maximum battery charging current from PV	100A
Built-in battery	No
PV PARAMETERS	
Maximum PV array open circuit power	5500 W
Maximum solar charge current	100 A
MPPT STARTING VOLTAGE	180 V
MPPT operating voltage range	120 ~ 450VDC
Maximum PV array open circuit voltage	500 VDC
OTHER PARAMETERS	
Screen	LCD
Connector diameter	M6 - 6 mm
Cooling system	2x fans
Noise level	45 dB
Protection	Anti-short-circuit Against overheating Against overload Against overload
Colour	Green, black
Additional information	Possibility to connect an additional wi-fi module Does not support LiFePO4 batteries Does not support BMS
Notices	We require the device to be installed by a qualified installer with the appropriate authorization. In case of installation by unauthorized persons, the warranty will automatically expire. The included protocol is an integral part of the warranty and is necessary to file a claim for defective goods within 24 months from the date of purchase.
Working temperature	-10°C ~ +50°C
Storage temperature	-15°C do +60°C
Package contents	Solar inverter RS232 communication cable Mounting accessories User manual CD Device installation protocol Warranty card
Package depth / length [mm]	590
Package height [mm]	208
Package width [mm]	390
Net weight [kg]	10.500
Gross weight [kg]	11.500
Certificate	CE
Warranty	24 month
EAN code	5901878538877