



## Qoltec Overcurrent Circuit Breaker B10 | Fuse | AC | 10A | 1P

Product code: 52602

The Qoltec brand overcurrent circuit breaker will effectively protect and safeguard the installation from circuit damage and the connected electrical consumers from the effects of overload and short circuit. They work on the principle of automatically switching off the current when the current exceeds a safe level.

- DIN rail mounting-TH35
- Characteristics B

### PROTECT YOUR EQUIPMENT - USE RELIABLE OVERCURRENT CIRCUIT BREAKERS



Every circuit of an electrical installation must be adequately protected from the effects of **overloads and short circuits**, so it is **mandatory to use appropriate protection**. One such device is an **overcurrent circuit breaker**, this element **interrupts the continuity of the circuit when the current in the circuit is too high**. It effectively eliminates the risk of damage to the installation caused by a temporary overvoltage or short circuit, which can lead to the destruction of the network and connected equipment.

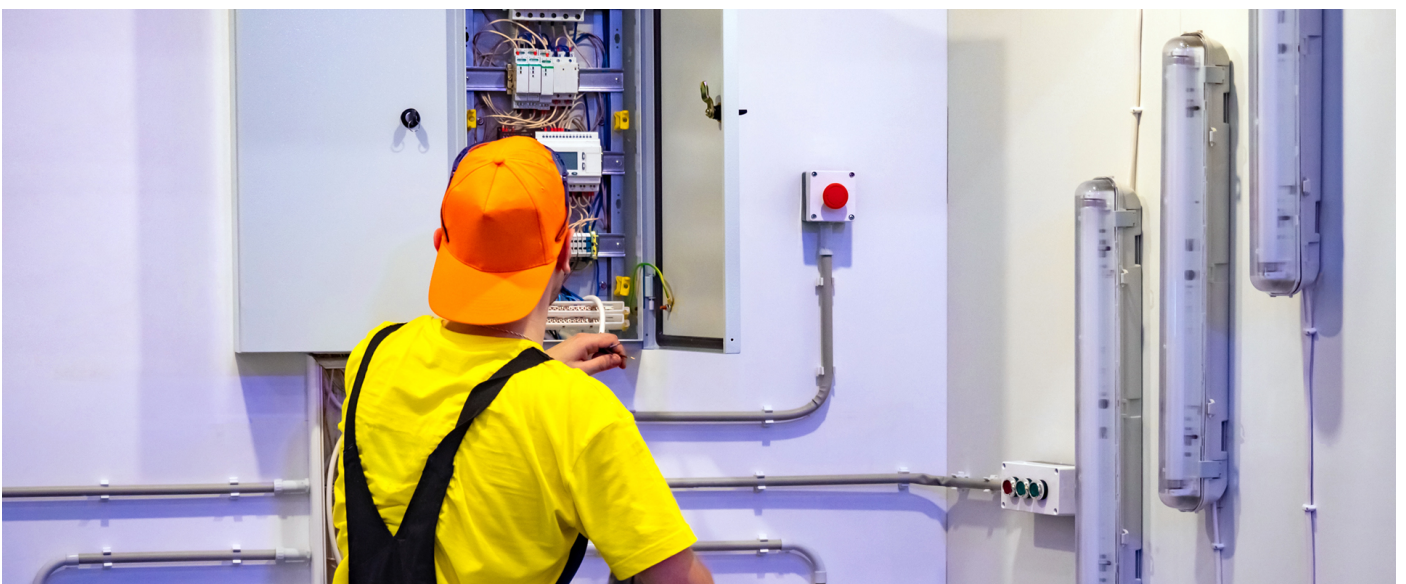
## CLEVERLY KEEPS YOU OUT OF DANGER



Overcurrent circuit breakers are used in a wide variety of applications, including domestic installations, workshops, production halls and many other places where it is important to protect electrical equipment. **Our product is a full :**

- short-circuit protection,
- quality guarantee,
- easy rail mounting,
- equipped with an electromagnetic and thermal trip.

## CONFIDENCE CONFIRMED BY A WARRANTY



Do you care about the high quality of the product you buy? Our solutions will meet your expectations. The product comes with a **24-month warranty valid from the date of purchase.**

## TECHNICAL DATA

Producer	Qoltec
Type	Overcurrent circuit breaker
Rated current	10A
Characteristic category	B
Class	II
Electrical life	4000 cycles
Mechanical life	10000 cycles
Number of poles	1
Type of assembly	TH35
IP rating	IP20
Material	PA66 + cooper
Relative humidity	30%-90%
Operating temperature	-10°C ~ +40°C
Dimensions (D/L x W x H)	75 x 17 x 86 mm
Package depth / length [mm]	80
Package width [mm]	20
Package height [mm]	90
Net weight [kg]	0.084
Gross weight [kg]	0.085
Certificate	CE
Warranty	24 month
EAN code	5901878526027