



Qoltec Power adapter for tablet Asus 40W | 19V | 2.1A | 2.5*0.7

Product code: 50082

The universal Qoltec power adapter dedicated to a tablet is a guarantee of safe power supply and use. You can use it at home or at work. It has a number of protections to protect connected devices. It is characterized by high efficiency, which reduces energy consumption.

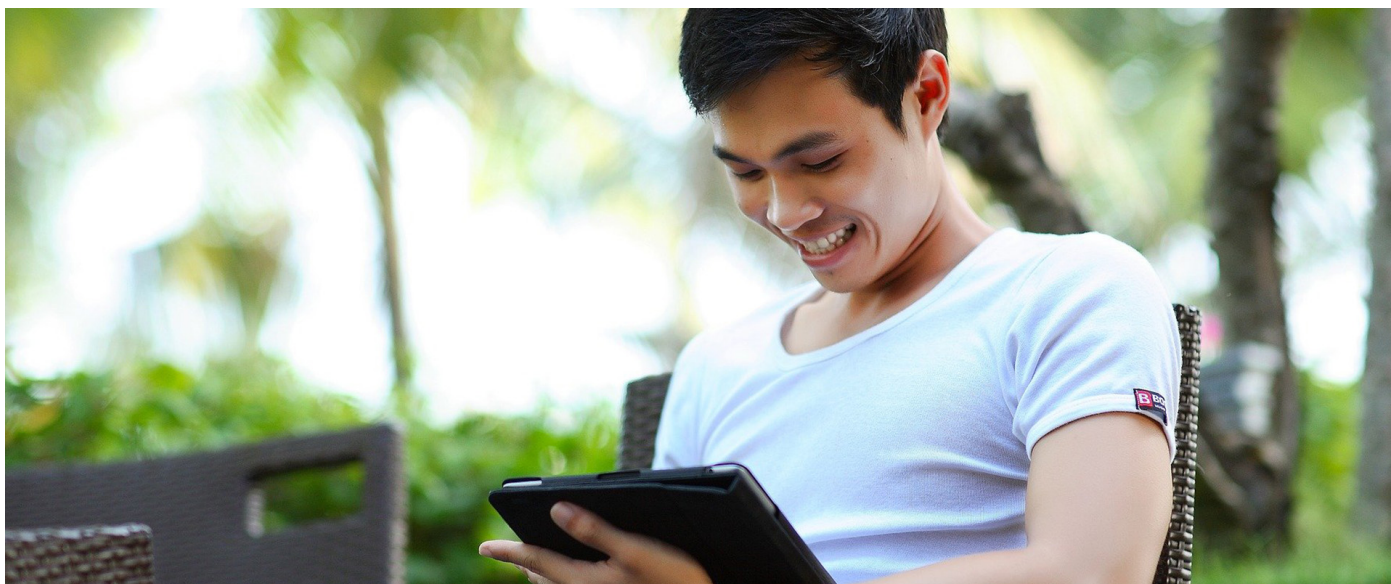
We invite you to familiarize yourself with the full range of our batteries. The [configurator](#) will help you choose the right model.

A SOLUTION DEDICATED TO YOU



This 40W ASUS Tablet power adapter with 2.5*0.7 plug has been manufactured with attention to every detail. It has been made from the highest quality materials to provide you with a reliable power supply in any situation. The technologies used will allow for low energy consumption and high efficiency.

COMFORT IS THE KEY TO SATISFACTION.



Lightweight and at the same time solid construction guarantees convenience and comfort of use. Universal black colour and ultra-modern design will fit perfectly into your interior.

DESIGNED SPECIFICALLY TO PROTECT YOUR SAFETY

Constructed from high quality materials, it offers total safety of use.

It is additionally equipped with **PROTECTIONS** :

- against too low or too high input voltage,
- against overload of each power supply line,
- short circuit in the power supply circuit,
- protects against damage caused by overheating.

CONFIDENCE CONFIRMED BY A WARRANTY

Do you want a high quality product? Our solutions will meet your expectations. Each of our chargers is covered by a 24 month guarantee from the date of purchase.

TECHNICAL DATA

Producer	Qoltec
Usable power	40 W
Input voltage	220 - 240 V
Output voltage	19 V
Output current	2.1 A
Frequency	50 - 60 Hz
Usage	Asus
Safety	Overvoltage protection Overload protection Short-circuit protection Overheating protection
Configurator	notebookspareparts.com/
OTHER PARAMETERS	
Colour	Black
Net weight [kg]	0,1930 kg
Gross weight [kg]	0,2310 kg
Warranty	24 months
EAN code	5901878500829