



Qoltec RACK Cabinet 19" | 12U | 600 x 635 x 600 | Tempered doors | Hanging | Steel case | Lock | Grey

Product code: 54487

The RACK cabinet is the perfect solution for companies, server rooms, and shops looking for a solid and secure place to store telecommunication equipment. It features a durable steel casing and perforated doors with a lock. By choosing RACK cabinets, you are investing in peace of mind, efficiency, and the highest technological standards for your data center.

YOUR EQUIPMENT IN GOOD HANDS – RACK CABINETS FOR IT, ENERGY, AND INDUSTRY



Ensuring optimal conditions for servers, network devices, and more stored in the RACK cabinet.

RACK cabinets are the foundation of every modern IT infrastructure, designed with the reliability and security of your equipment in mind. Ideal for storing servers, network devices, UPS power supplies, and switches, they not only provide complete protection but also optimal working conditions for the key components of your network. With a well-designed ventilation system and the option to install fans, RACK cabinets ensure effective cooling, minimizing the risk of failure and extending the life of your equipment.

Moreover, these versatile solutions are used not only in the IT sector but also in energy and industry, offering excellent organization, order, and safety in any technological environment. Choose RACK cabinets from Qoltec and gain peace of mind knowing that your infrastructure is in the best hands!

STABILITY, SECURITY, AND PERFECT ORGANIZATION FOR YOUR SERVER ROOM



Optimal space organization is ensured by selecting the right model from Qoltec's offerings.

You no longer need to worry about the stability and security of your servers – with Qoltec's RACK cabinets, you have full control over your IT infrastructure. A well-organized and tidy space not only guarantees optimal device arrangement but also ensures their reliable operation.

RACK cabinets are a key element of every server room, providing stability, efficiency, and the safety of your data. With a wide range of parameters and design options, you can easily find the model that perfectly meets your requirements. By choosing RACK cabinets, you invest in peace of mind, efficiency, and the highest technological standards for your data center.

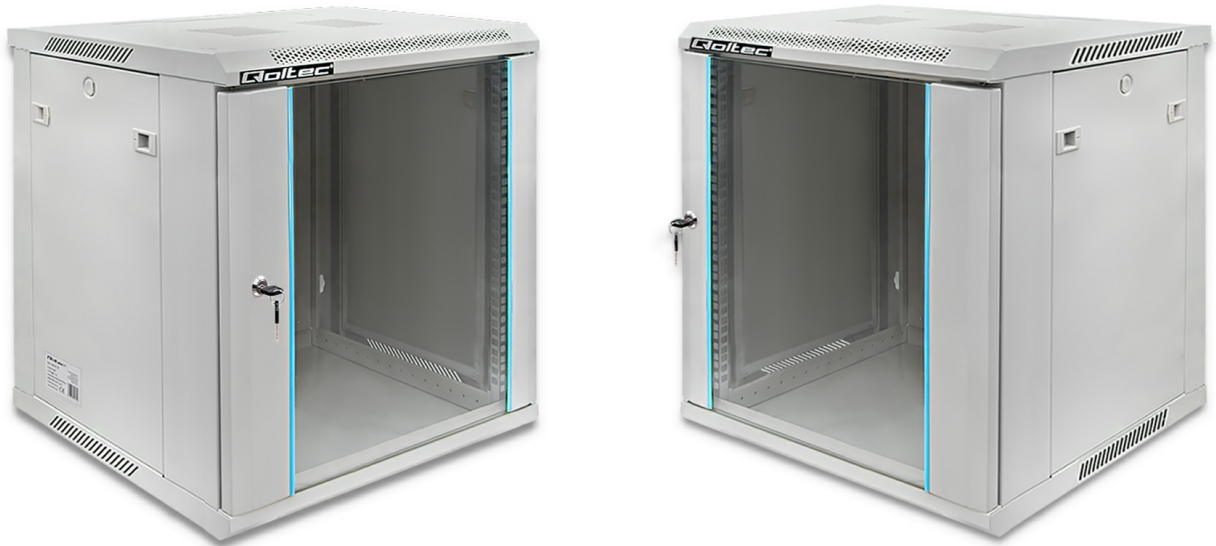
PROTECT YOUR EQUIPMENT WITH A DURABLE SPCC ENCLOSURE



Easy Installation, Maximum Protection ensured by cold-rolled steel construction.

The RACK cabinet enclosure made from cold-rolled SPCC steel is a guarantee of durability and strength that your IT infrastructure needs. The robust construction provides reliable protection even in the most demanding conditions, safeguarding your equipment from mechanical damage and extending its lifespan. Additionally, thanks to the thoughtful design, the enclosure is easy to install, allowing for quick and hassle-free deployment. Choosing SPCC steel is an investment in long-term protection and the safety of your devices.

SECURITY AND ELEGANCE IN THE ORGANIZATION OF ICT EQUIPMENT



Tempered glass door with lock

A server cabinet is not only a practical solution for storing ICT equipment, but also a guarantee of security, durability and elegant design. Equipped with tempered glass door, damage-resistant doors that not only protect equipment, but also allow easy monitoring of the contents. Key locking is an additional layer of protection, providing full access control. It makes the organization and management of telecommunications infrastructure aesthetically pleasing, easier and more efficient.

TRUST BACKED BY WARRANTY



Product covered by a 2-year warranty

Looking for high quality in the product you buy? **Our solutions will meet your expectations.** Each RACK cabinet we offer is covered by a 24-month warranty, effective from the date of purchase.

TECHNICAL DATA

Producer	Qoltec
Type	Hanging
Unit height	12 U
Maximum static load	70kg
Usage	Server room Teletechnics Power engineering Industry
Additional information	<ul style="list-style-type: none">- Tempered front doors with a lock- Option to install fans- Removable side panels
OTHER PARAMETERS	
Material	SPCC Cold Rolled Steel, tempered glass
Colour	Grey
Dimensions (D/L x W x H)	600 x 600 x 635 mm
Package contents	1 x RACK cabinet 1 x Mounting set 1 x Front lock
Package depth / length [mm]	630
Package width [mm]	230
Package height [mm]	670
Net weight [kg]	25.8000
Gross weight [kg]	27.5000
Warranty	24 months
EAN code	5901878544878